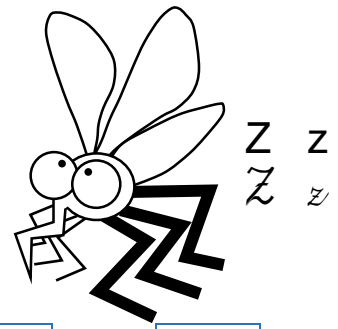
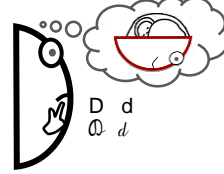
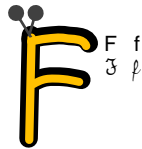


☺ LEGGI LE SILLABE.



- | | | | | | | |
|---|----|----|----|----|----|----|
| 1 | ZI | TI | LA | ZO | ZE | RI |
| 2 | ZU | FO | LO | SA | ZI | VA |
| 3 | DA | ZI | ZA | MA | ZE | TA |
| 4 | vi | zi | ze | bu | na | zi |
| 5 | zo | ne | da | to | ze | ro |
| 6 | zu | ma | re | ve | la | to |
| 7 | zi | re | za | zo | u | ze |

☺ LEGGI LE PAROLE; ALCUNE SONO ILLUSTRATE. QUALE MANCA?

Z	O	R	R	O
z	o	r	r	o

Z	A	P	P	E
z	a	p	p	e

P	A	Z	Z	I	A
p	a	z	z	i	a

P	U	Z	Z	L	E
p	u	z	z	l	e

P	U	Z	Z	O	L	A
p	u	z	z	o	l	a

Z	A	M	P	E
z	a	m	p	e

Z	E	B	R	A
z	e	b	r	a

Z	U	P	P	A
z	u	p	p	a

